

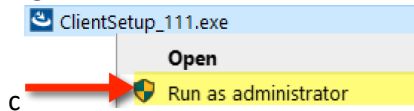
Perceptive Content Foundation EP4 7.7.0 Installation Guide

Contents

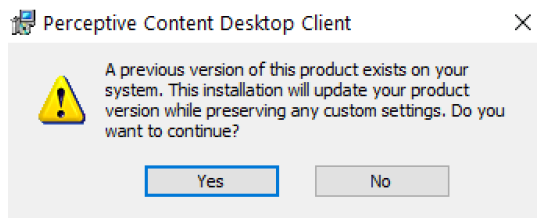
<u>UPGRADING FROM PERCEPTIVE CONTENT 7.2.3.240 TO PERCEPTIVE CONTENT FOUNDATION EP4 7.7.0.111</u>	2
<u>NEW INSTALLATION OF PERCEPTIVE CONTENT FOUNDATION EP4 7.7.0.111 CLIENT</u>	5
<u>CONNECTION PROFILES</u>	8
<u>SERVER ADDRESSES</u>	11

Upgrading from Perceptive Content 7.2.3.420 to Perceptive Content Foundation EP4 7.7.0.111

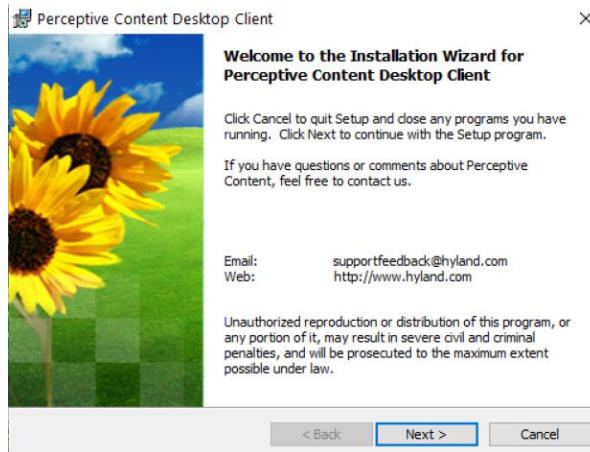
1. Download the installer from the OIT Site License Page <https://software.duke.edu/node/156>.
2. Right-click on the downloaded ClientSetup_111.exe file and click “Run as Administrator”.



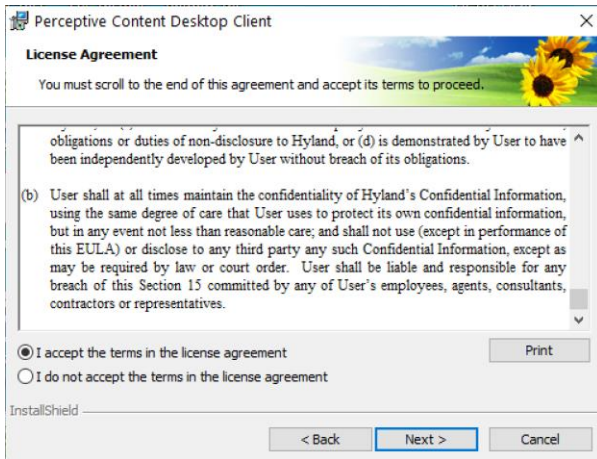
3. The installer should recognize that this is an upgrade to the client. Once you receive this box, click “Yes”.



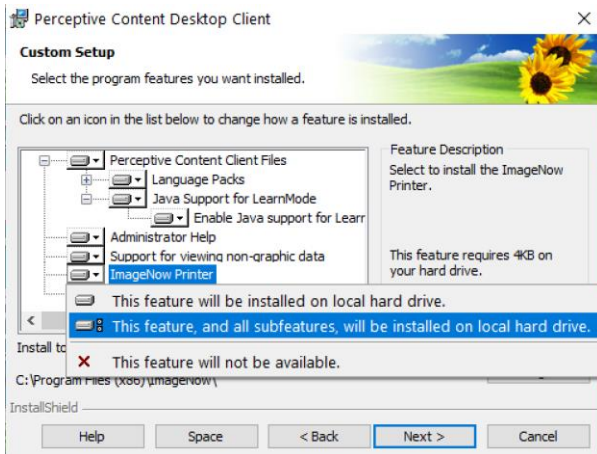
4. Click “Next” in the Installation Wizard for Perceptive Content Desktop Client.



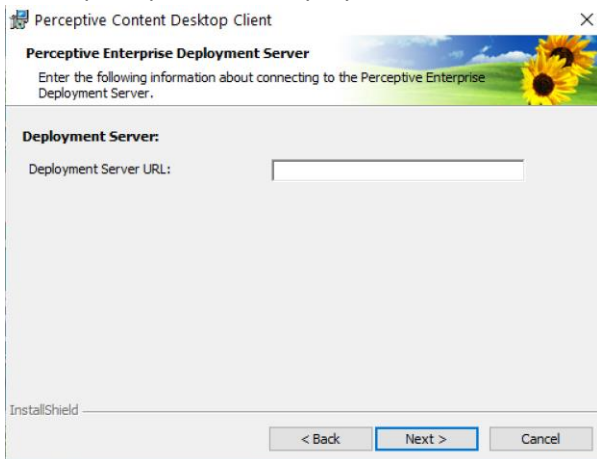
5. Scroll to the bottom of the license agreement, click the radio button “I accept the terms in the license agreement” and click “Next”.



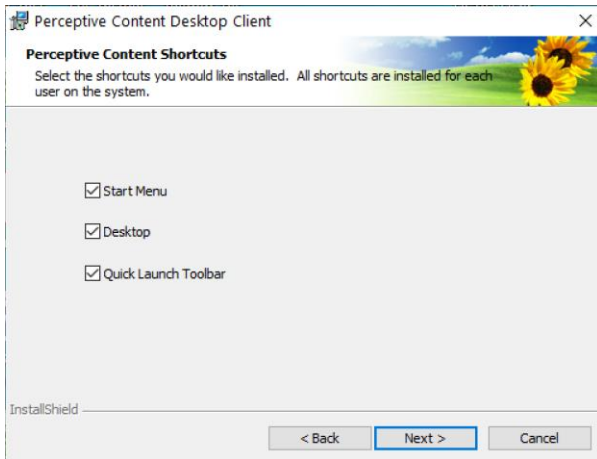
- Click on Perceptive Content Client Files and ImageNow Printer and select to install the feature, and all subfeatures, will be installed on local hard drive. Once this has been done, click “Next”.



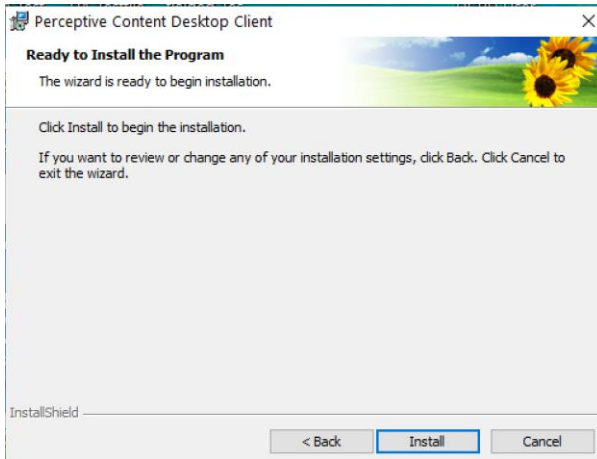
- When prompted for a Deployment Server URL, leave this blank and click “Next”.



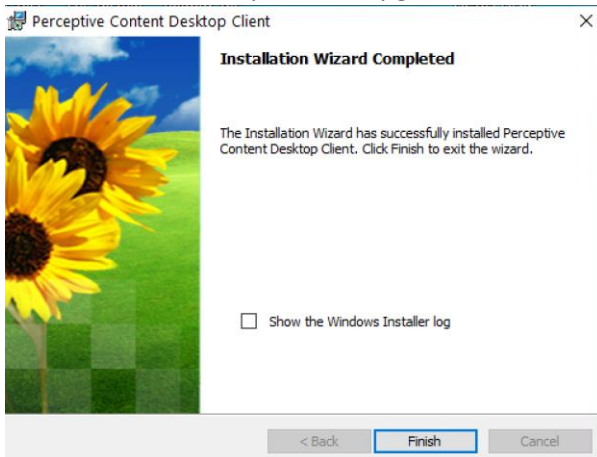
- Configure shortcut options as desired and click “Next”.



9. You are now ready to upgrade the application. Click "Install".



10. Click "Finish" to complete the upgrade.

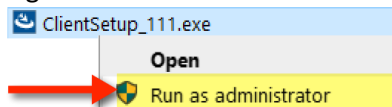


11. If prompted, click "Yes" to Reboot when possible.

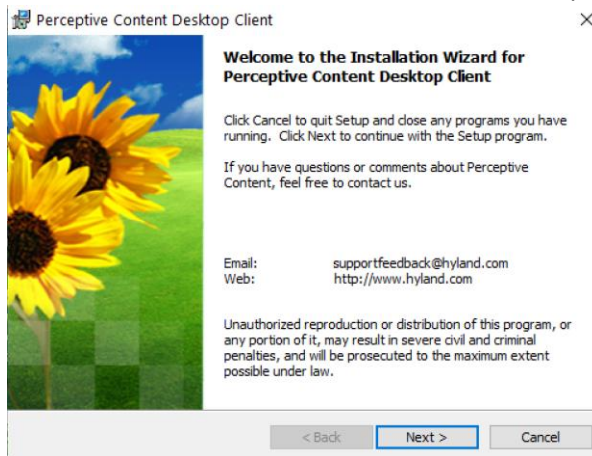
New Installation of Perceptive Content Foundation EP4 7.7.0.111 Client

Prerequisite: Visual C++ Redistributable for Visual Studio 2012 Update 4 32bit version must be installed. It can be downloaded from <https://www.microsoft.com/en-us/download/details.aspx?id=30679>

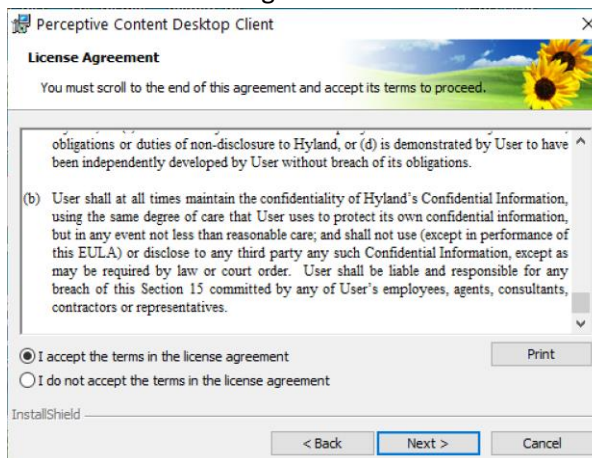
1. Download the installer from the OIT Site License Page <https://software.duke.edu/node/156>.
2. Right-click on the downloaded ClientSetup_111.exe file and click “Run as Administrator”.



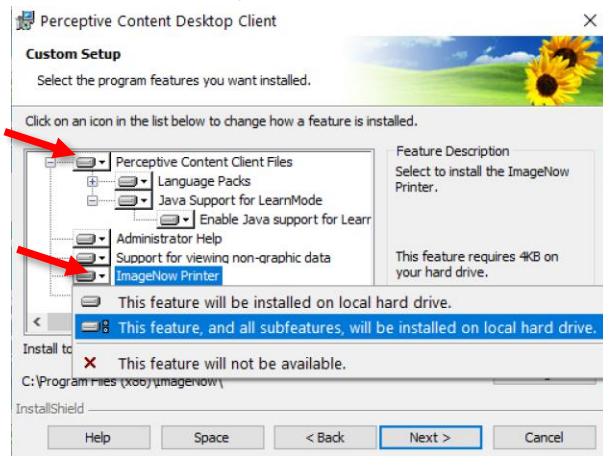
3. Click “Next” in the Installation Wizard for Perceptive Content Desktop Client.



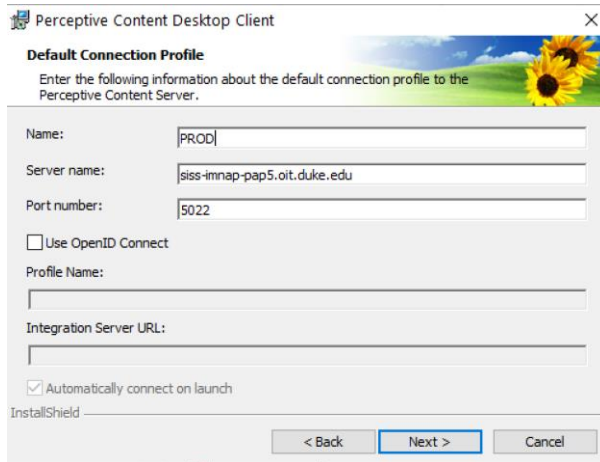
4. Scroll to the bottom of the license agreement, click the radio button that says “I accept the terms in the license agreement” and click “Next”.



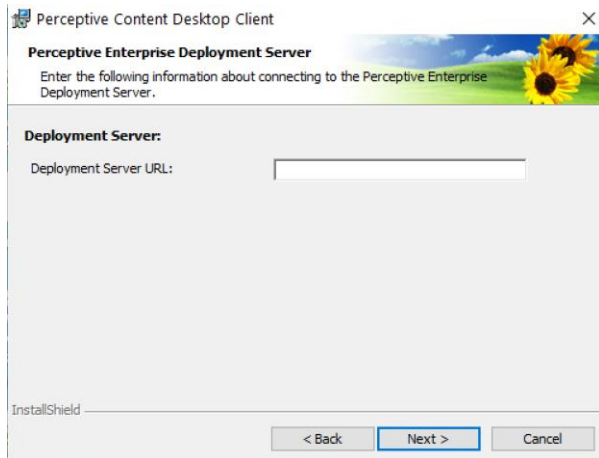
5. Click on Perceptive Content Client Files and ImageNow Printer and select to install the feature, and all subfeatures, will be installed on local hard drive. Once this has been done, click “Next”.



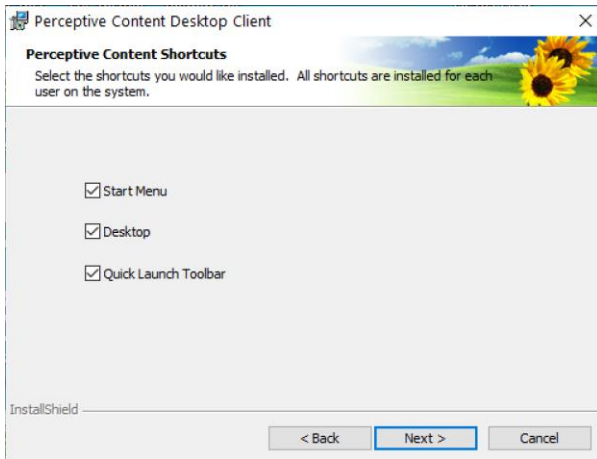
6. Configure the Default Connection Profile as follows and click “Next”.



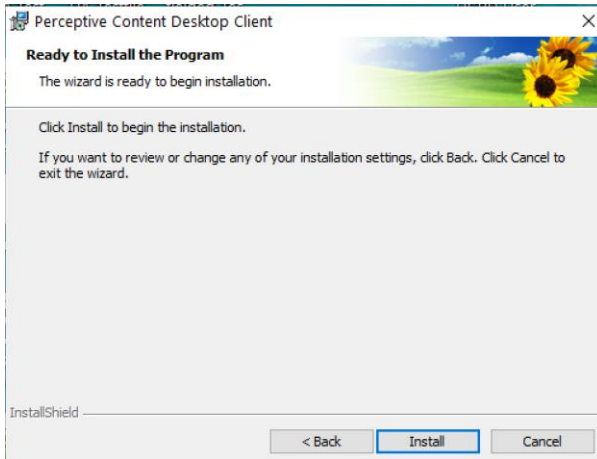
7. When prompted for a Deployment Server URL, leave this blank and click “Next”.



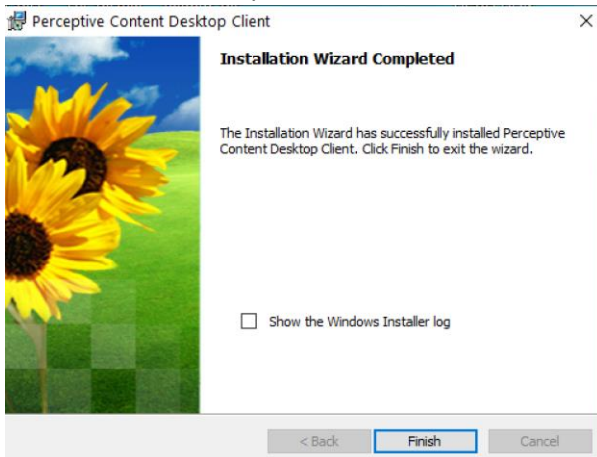
8. Configure shortcut options as desired and click “Next”.



9. You are now ready to install the application. Click "Install".



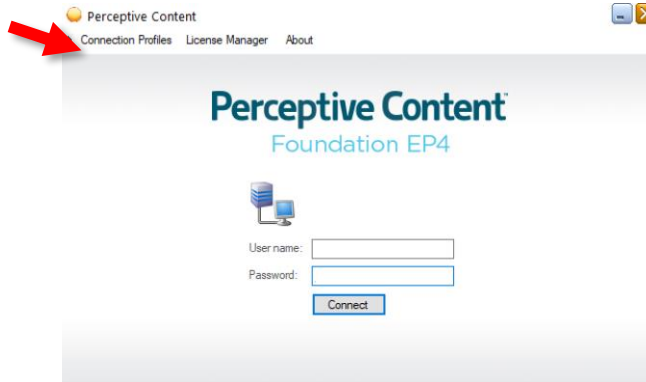
10. Click "Finish" to complete the installation.



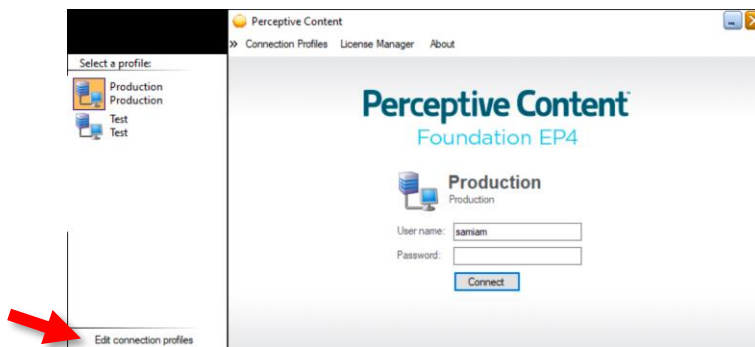
11. If prompted, click "Yes" to Reboot when possible.

Connection Profiles

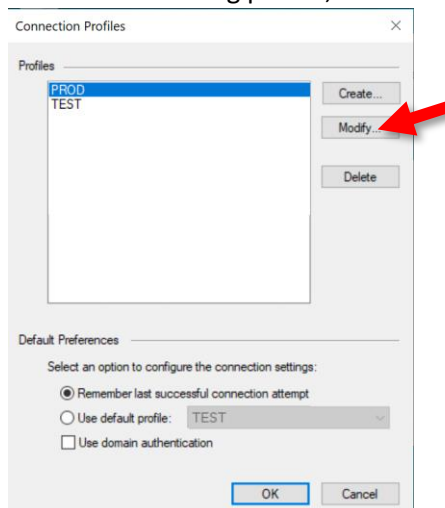
1. Launch Perceptive Content and click on the “Connection Profiles” tab.



2. Click “Edit connection profiles” at the bottom of the profile window. *You should already have a Production profile that was generated during the installation or carried over from the upgrade to 7.7.0..*



3. To edit an existing profile, select the one you need to adjust and click on “Modify”.



4. Make the adjustments and click "OK".

Modify Connection Profile

Name:

Server ID:

Server Type:

Port Number:

Login Profiles

Use OpenID Connect

Profile Name:

Integration Server URL:

Automatically connect on launch

Remember Username

Always prompt

Set to:

Remember last successful user name

5. To create a new profile, click on "Create".

Connection Profiles

Profiles

Default Preferences

Select an option to configure the connection settings:

Remember last successful connection attempt

Use default profile:

Use domain authentication

6. Enter the Name as you want it to appear in the profile pane and the login window. Enter the server address, the type of environment the server resides in and the port. Choose the User Name option that best fits your needs. Click "OK" when you are finished.

New Connection Profile

Name: TEST

Server ID: siss-imnap-tap5.win.duke.edu

Server Type: Test

Port Number: 5022

Login Profiles

Use OpenID Connect

Profile Name:

Integration Server URL:

Automatically connect on launch

Remember Username

Always prompt

Set to: samiam

Remember last successful user name

OK Cancel

7. You should now see the new profile. In this example, it is for the Test environment.

Connection Profiles

Profiles

PROD

TEST

Create...

Modify...

Delete

Default Preferences

Select an option to configure the connection settings:

Remember last successful connection attempt

Use default profile: TEST

Use domain authentication

OK Cancel

8. Adjust your default preferences, choose the profile you wish to use and click "OK" for it appear as the connection in the login window. Domain Authentication is not needed in the Duke environment.

Server Addresses

Production

Production was upgraded to 7.7.0.111 on April 22, 2022. The 7.2.3.420 client can no longer be used to access Production.

Server ID: `siss-imnap-pap5.oit.duke.edu`
Port: `5022`

Test

Test should only be added by power users who have been granted access to test the latest releases. Test is currently running 7.7.0.111.

Server ID: `siss-imnap-tap5.win.duke.edu`
Port: `5022`