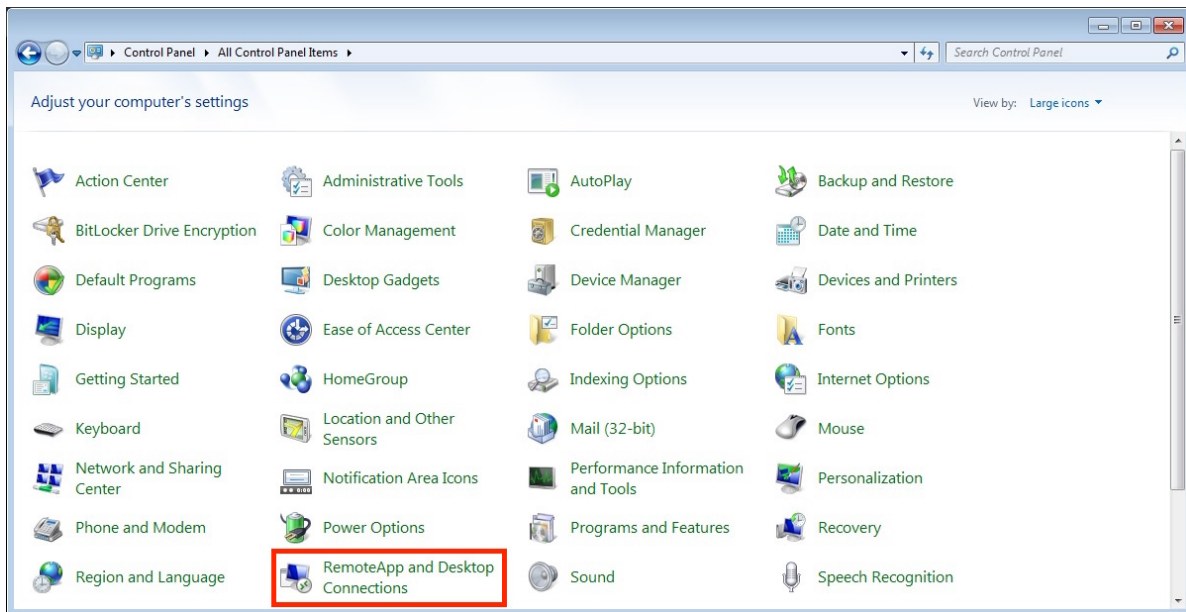


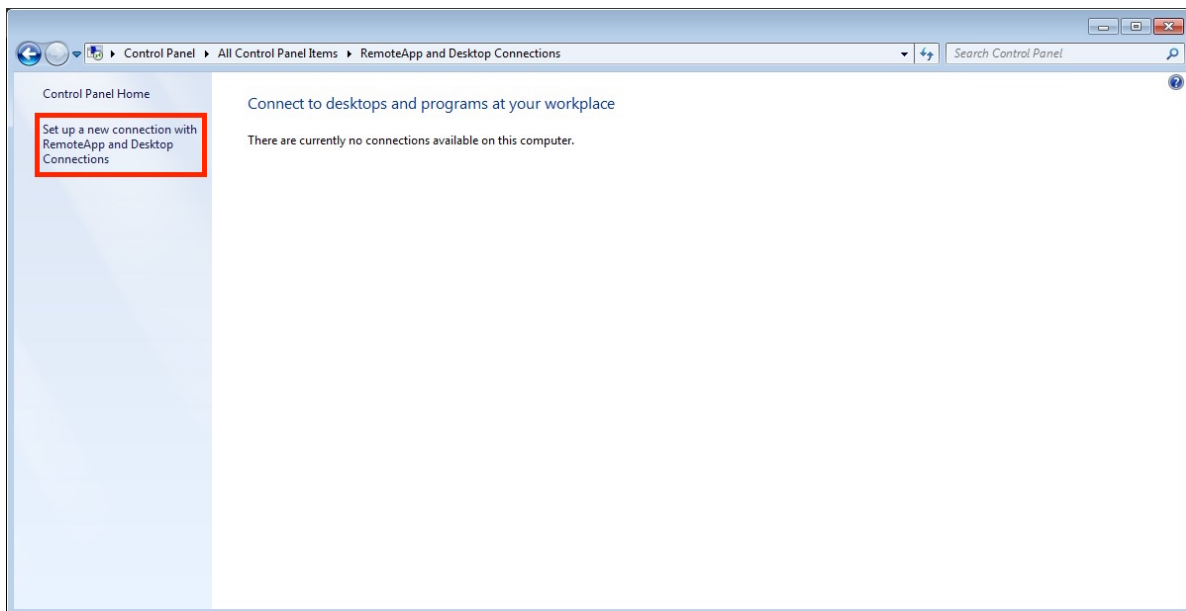
## Instructions for Remote Desktop App for Windows

Technical requirements: Operating systems Windows 7, 8, 8.1 and 10

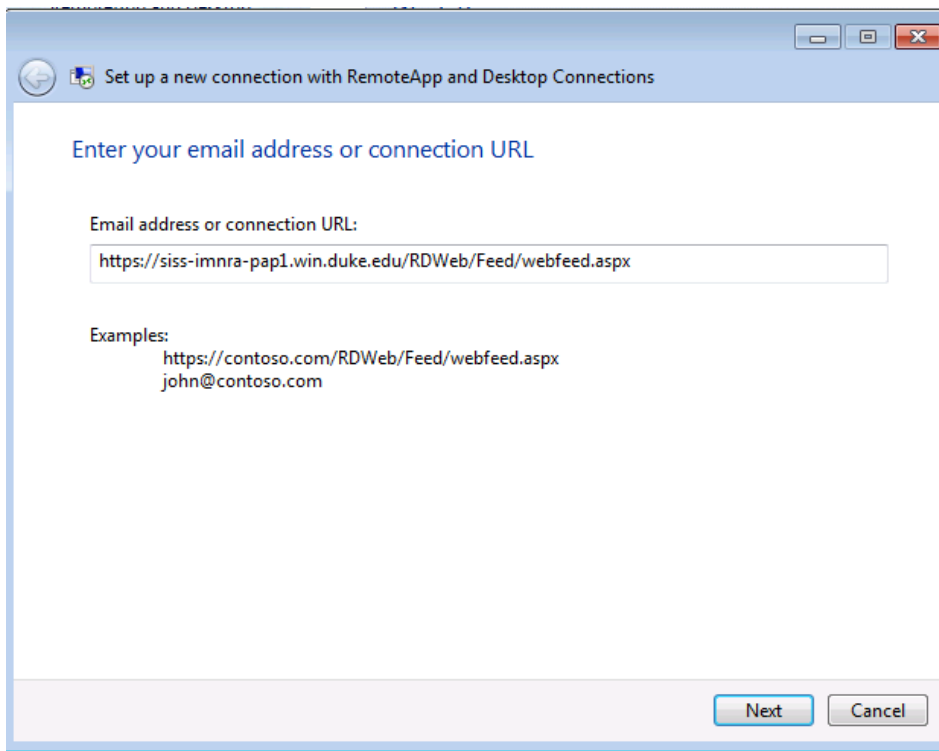
- Click on the Start Menu
- Choose Control Panel
- Select Remote App and Desktop Connections (you might need to change the view by from Category to Large or Small Icons)



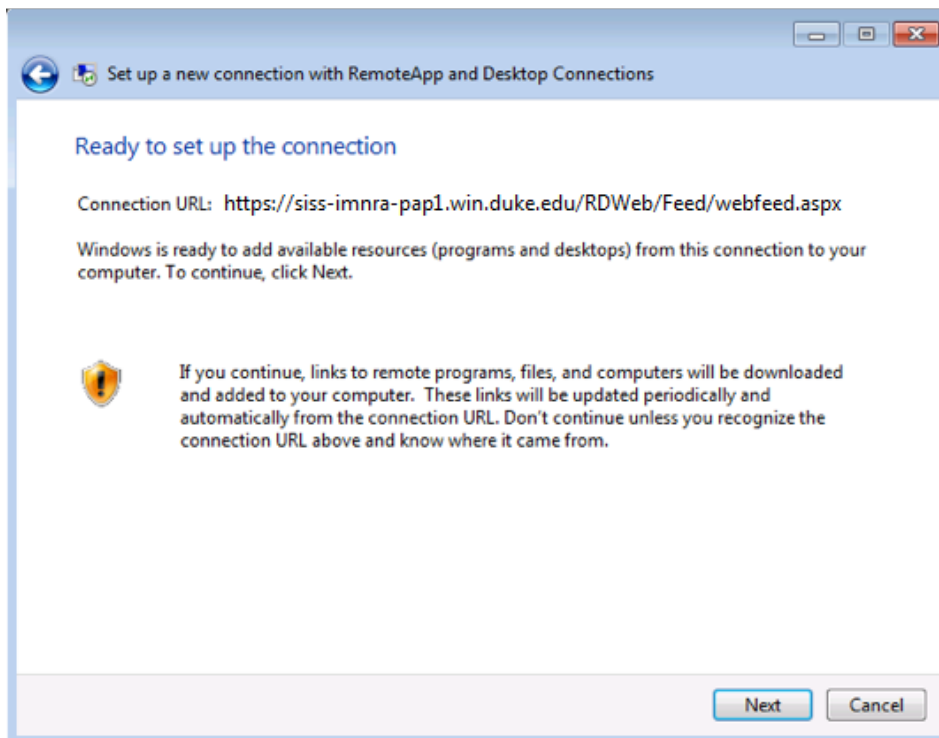
- Click on Set up a new connection with RemoteApp and Desktop Connections



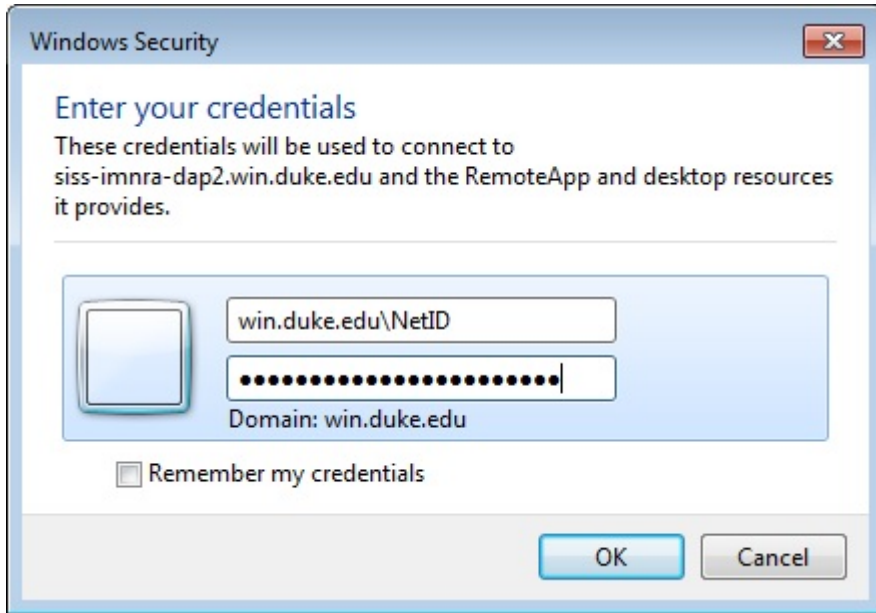
- Enter the webfeed URL in the next window then click Next
  - URL: <https://siss-imnra-pap1.win.duke.edu/RDWeb/Feed/webfeed.aspx>



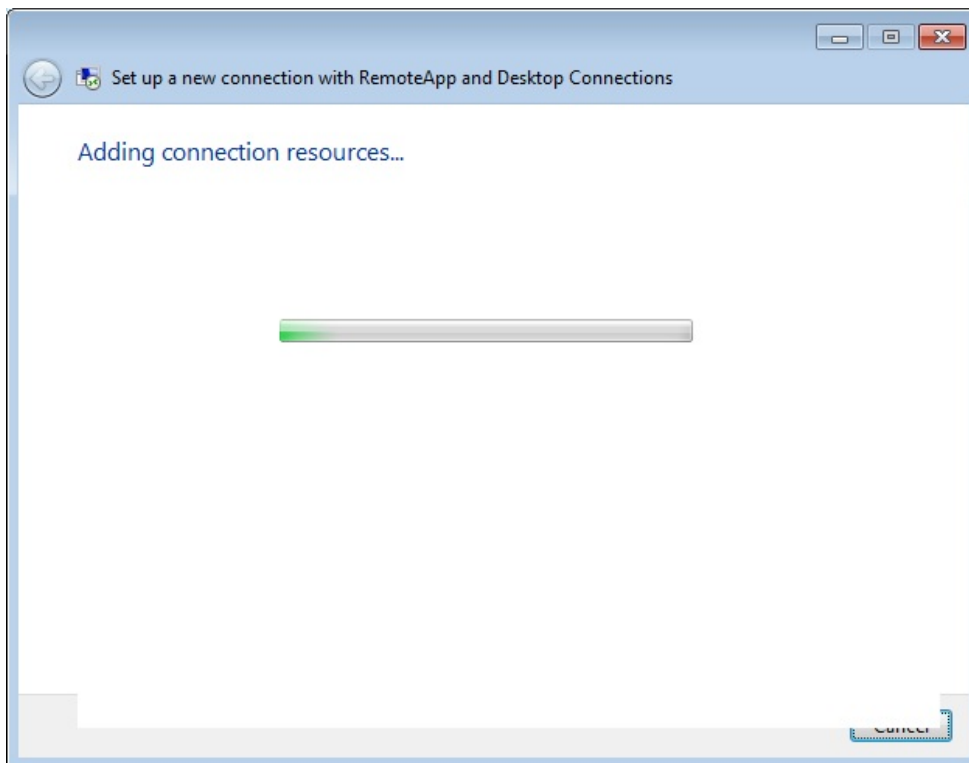
- Click Next to trust the connection you just entered.



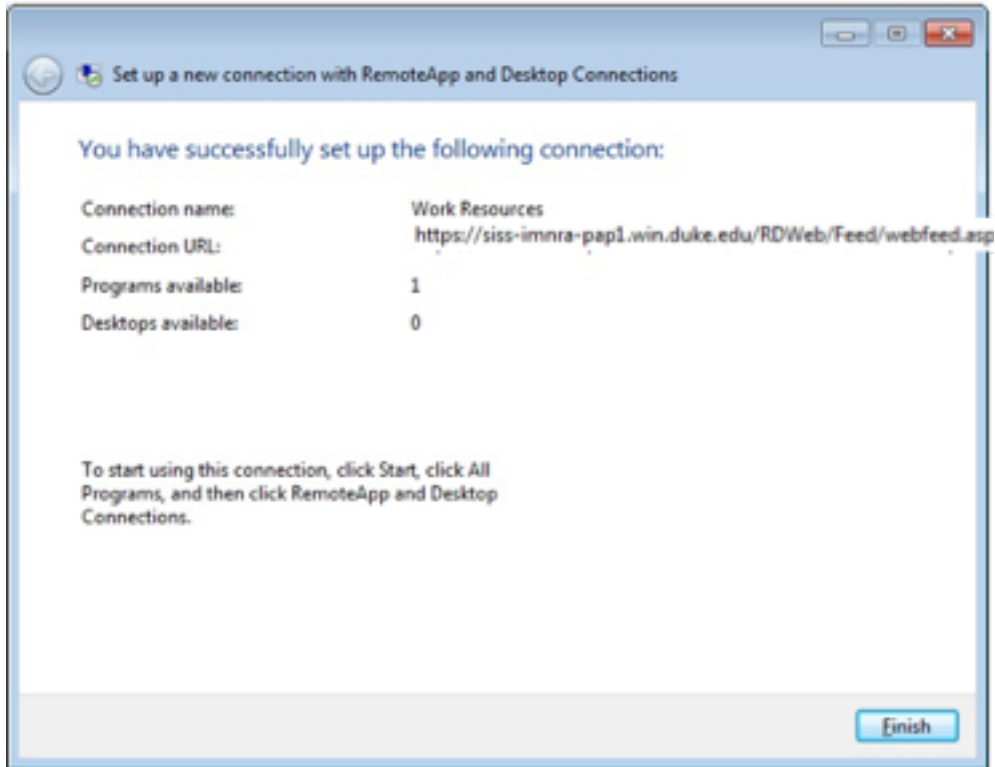
- Enter the following information in the resulting window:
  - User name: win.duke.edu\NetID
  - Password: Your NetID password



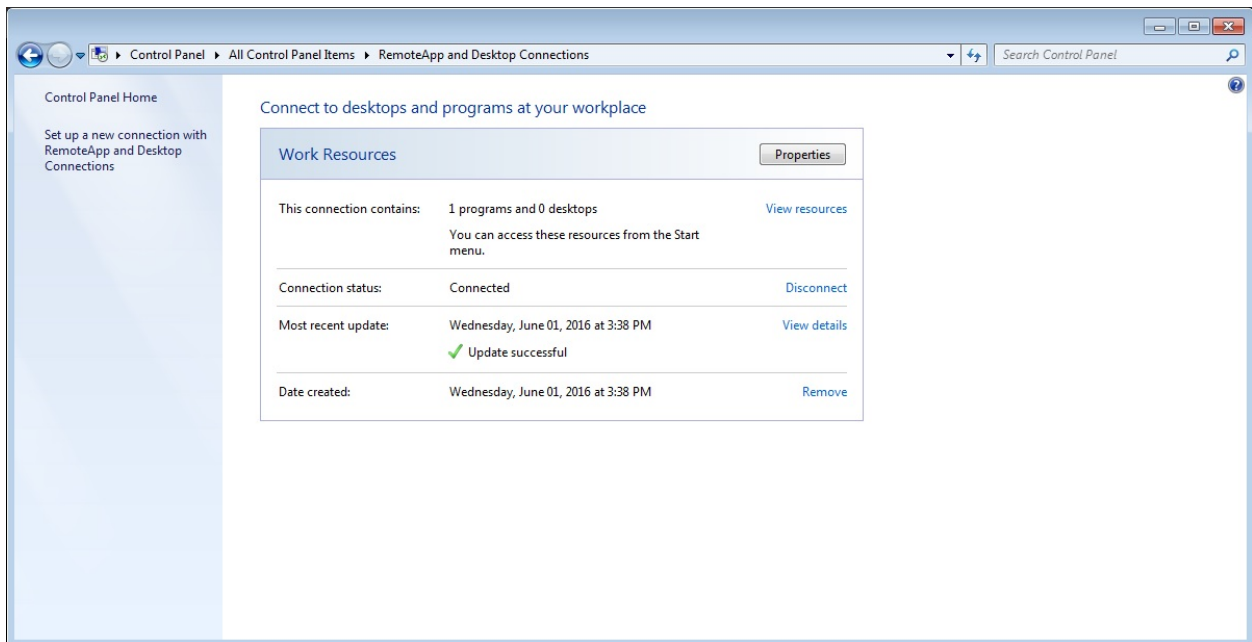
- You should now see the Adding connection resources window. This will take a few seconds.



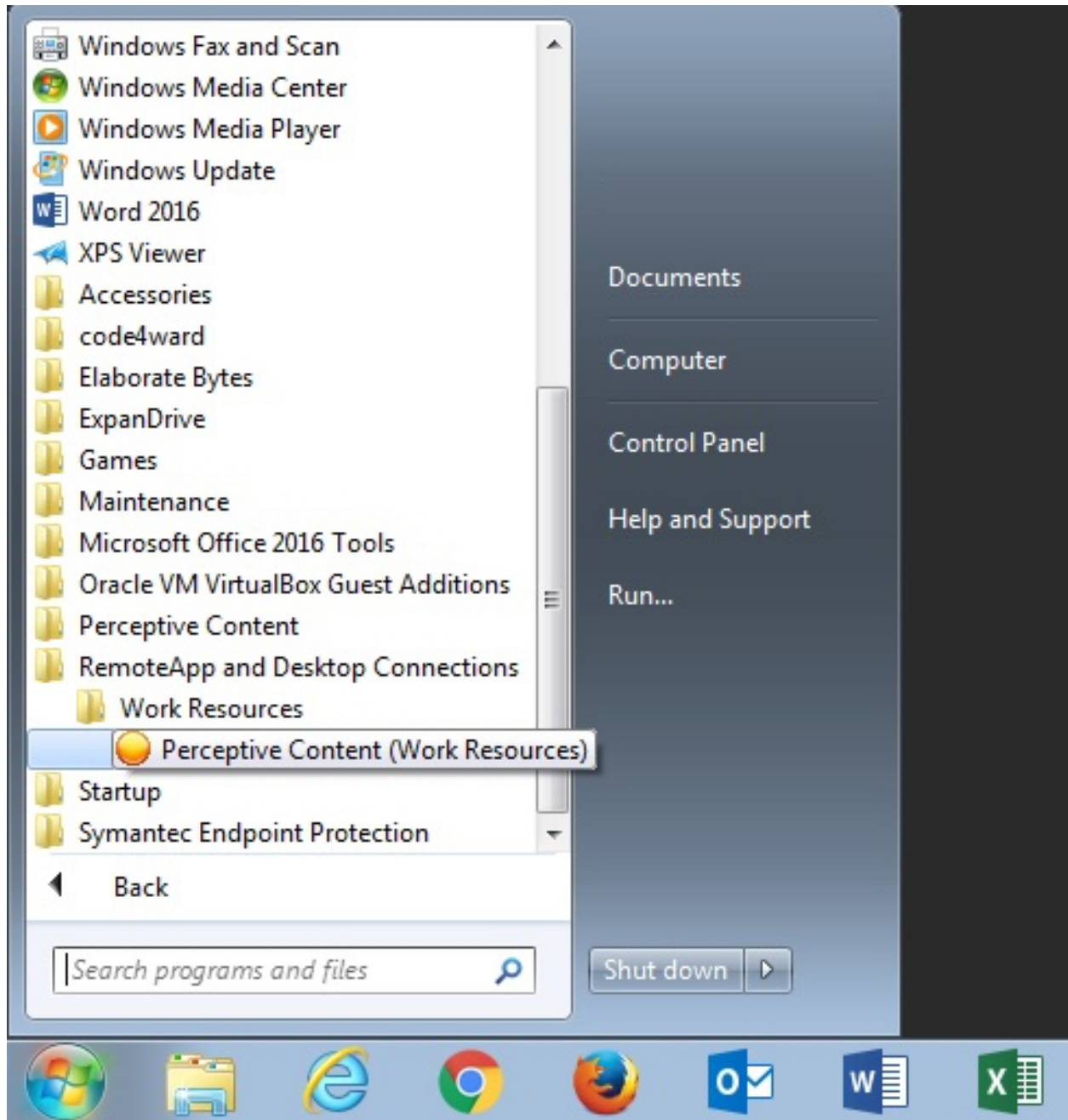
- When it is complete you will see the success window. Click Finish



- The next window will show you what you have access to.



- You can access your app by clicking on Start -> All Programs -> Remote App and Desktop Connections -> Work Resources



- If you want this on your desktop, right click and choose Send-To then select Desktop to make a shortcut.
- Double-click to launch the RemoteApp